



# ChemR23 Polyclonal Antibody

<b>Catalog No</b>	YP-Ab-13176
<b>Isotype</b>	IgG
<b>Reactivity</b>	Human;Mouse;Rat
<b>Applications</b>	WB;IHC;IF;ELISA
<b>Gene Name</b>	CMKLR1
<b>Protein Name</b>	Chemokine-like receptor 1
<b>Immunogen</b>	The antiserum was produced against synthesized peptide derived from human CMKLR1. AA range:221-270
<b>Specificity</b>	ChemR23 Polyclonal Antibody detects endogenous levels of ChemR23 protein.
<b>Formulation</b>	Liquid in PBS containing 50% glycerol, 0.5% BSA and 0.02% sodium azide.
<b>Source</b>	Polyclonal, Rabbit,IgG
<b>Purification</b>	The antibody was affinity-purified from rabbit antiserum by affinity-chromatography using epitope-specific immunogen.
<b>Dilution</b>	Western Blot: 1/500 - 1/2000. IHC-p: 1:100-300 ELISA: 1/20000. IF 1:100-300 Not yet tested in other applications.
<b>Concentration</b>	1 mg/ml
<b>Purity</b>	≥90%
<b>Storage Stability</b>	-20°C/1 year
<b>Synonyms</b>	CMKLR1; CHEMR23; DEZ; Chemokine-like receptor 1; G-protein coupled receptor ChemR23; G-protein coupled receptor DEZ
<b>Observed Band</b>	42kD
<b>Cell Pathway</b>	Cell membrane ; Multi-pass membrane protein . Internalizes efficiently in response to RARRES2. .
<b>Tissue Specificity</b>	Prominently expressed in developing osseous and cartilaginous tissue. Also found in adult parathyroid glands. Expressed in cardiovascular system, brain, kidney, gastrointestinal tissues and myeloid tissues. Expressed in a broad array of tissues associated with hematopoietic and immune function including, spleen, thymus, appendix, lymph node, bone marrow and fetal liver. Among leukocyte populations abundant expression in monocyte-derived macrophage and immature dendritic cells (DCs). High expression in blood monocytes and low levels in polymorphonuclear cells and T-cells. Expressed on endothelial cells. Highly expressed in differentiating adipocytes.
<b>Function</b>	developmental stage:Expressed during bone development.,function:Orphan receptor. Could be a chemotactic peptide receptor. May have a function in bone metabolism. Acts as a coreceptor for several SIV strains (SIVMAC316, SIVMAC239, SIVMAC17E-FR and SIVSM62A), as well as a primary HIV-1 strain (92UG024-2).,similarity:Belongs to the G-protein coupled receptor 1 family.,tissue specificity:Prominently expressed in developing osseous and cartilaginous tissue. Also found in adult parathyroid glands.,



## Background

developmental stage: Expressed during bone development., function: Orphan receptor. Could be a chemotactic peptide receptor. May have a function in bone metabolism. Acts as a coreceptor for several SIV strains (SIVMAC316, SIVMAC239, SIVMACL7E-FR and SIVSM62A), as well as a primary HIV-1 strain (92UG024-2)., similarity: Belongs to the G-protein coupled receptor 1 family., tissue specificity: Prominently expressed in developing osseous and cartilaginous tissue. Also found in adult parathyroid glands.,

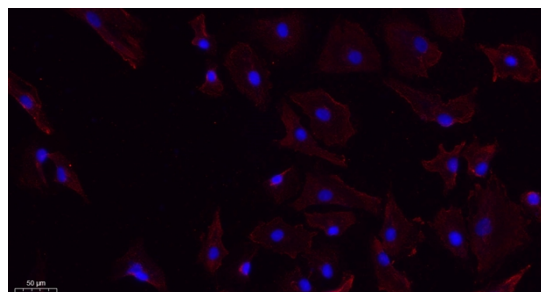
## matters needing attention

Avoid repeated freezing and thawing!

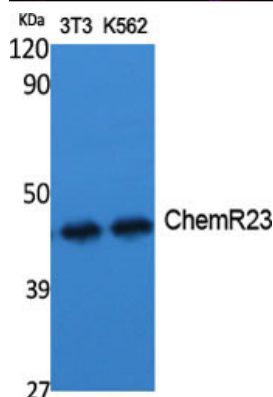
## Usage suggestions

This product can be used in immunological reaction related experiments. For more information, please consult technical personnel.

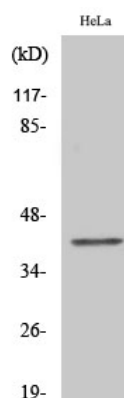
## Products Images



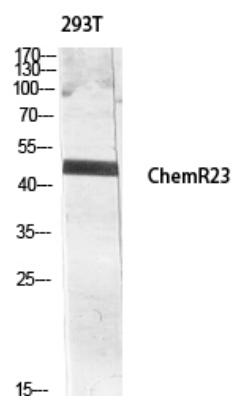
Immunofluorescence analysis of A549. 1, primary Antibody (red) was diluted at 1:200 (4°C overnight). 2, Goat Anti Rabbit IgG (H&L) - Alexa Fluor 594 Secondary antibody was diluted at 1:1000 (room temperature, 50min). 3, Picture B: DAPI (blue) 10min.



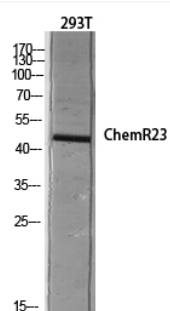
Western Blot analysis of various cells using ChemR23 Polyclonal Antibody diluted at 1:1000



Western Blot analysis of COLO205 cells using ChemR23 Polyclonal Antibody diluted at 1:1000



Western blot analysis of 293T lysis using ChemR23 antibody. Antibody was diluted at 1:1000



Western blot analysis of 293T lysis using ChemR23 antibody. Antibody was diluted at 1:1000